



TRAILED V-TYPE HEAVY DISC HARROW

USER GUIDE



 **ALPLER**

ATTENTION



**DO NOT
OPERATE THE MACHINES
BEFORE READING THIS MANUAL!**

INDEX

1. INTRODUCTION	3
2. SAFETY RULES	4-5
2.1. POINTS TO CONSIDER WHILE OPERATING	4
2.2. GENERAL RULES TO BE OBSERVED	5
3. SETTINGS	5-7
3.1. TRACTOR PREPARATION	5-6
3.2. ASSEMBLY OF THE DISC HARROW TO THE TRACTOR	7
3.3. DISASSEMBLY OF THE DISC HARROW FROM THE TRACTOR	7
3.4. DISC HARROW MAINTENANCE	7
4. WARRANTY	8

WARNING SIGNS & MEANINGS



CAUTION

This sign warns that the operations described could cause damage to machine, if they are not carried out correctly.



READ MANUAL FIRST

Read the "Operating and Maintenance Manual" carefully before first start and keep the manual nearest.



WARNING

This sign warns that the operations described could cause serious lesions or long term health risks, if they are not carried out correctly.



KEEP CHILDREN AWAY

This symbol expresses to keep the children away against any risk.



Be careful against danger of entrapment.



DO NOT STAND NEAR THE MACHINE WHILE IT IS WORKING

This symbol expresses not to stand near the machine while it is working to avoid any injury.



Do not carry people or loads on the plough.



Locations which need to be greased in each use.

1. INTRODUCTION

Dear Farmer,

Firstly, we congratulate you for your correct preference on the way to efficiency by selecting the brand “ALPLER”. As your agricultural partner, we offer you our product in which we combined high quality, low operational cost and effective after-sale service concept.

All of “ALPLER” products are designed for the most efficient and the safest use and tested accordingly in cooperation with the relevant university departments, agricultural establishments and farmers. We request you to read the user manual before the first operation in order to use our product in a more effective manner as well as for product and your own safety. The failures that may result from using the product beyond the instructions for use specified in this manual are not covered by “ALPLER” warranty. “ALPLER” products are manufactured for agricultural utilization purposes only, and our company does not assume any liability against the conditions arising from misuse. Maintenance, repair and operation of our products must be carried out by those who were informed on the relevant and possible dangers.

Enjoy your new product and we wish you productive and fruitful years.

We hope to serve you for a long time...



CAUTION

If the product owner changes in the future, please submit this manual to the new owner of the product and inform on safety measures.

2. SAFETY RULES

- Be careful against danger of entrapment while attaching/detaching the disc harrow to/from the tractor; do not stand between the disc harrow and tractor.
- Do not move the tractor without being sure that disc harrow is completely attached to the tractor, and it is completely detached from tractor while detaching.
- Do not carry people or loads on the disc harrow.
- When the disc harrow is elevated, do not stand under it.
- Be careful against the pointed and sharp edges on the disc harrow.
- Be careful against danger of tipping over of the tractor while working on sloping lands.
- For turning, maximum area to which the disc harrow can reach should be considered.
- Attachment/detachment of the disc harrow should be carried out with a helper if possible, if not, apply handbrake while getting off the tractor.
- While transporting the disc harrow on the highways, observe applicable traffic rules and be more careful.
- If any maintenance or repairs are to be made on the disc harrow, the disc harrow should be leveled first and completely lowered to the ground, and the necessary safety precautions should be taken.
- While the disc harrow is detached from the tractor, the support leg should be used against the danger of tipping over.
- The disc harrow and tractor categories should match each other.
- Warning labels on the disc harrow should always be clean and visible. If the warning labels have become worn, lost or illegible for any reason, they should be obtained from our nearest dealer and affixed to their place.

2.1. POINTS TO CONSIDER WHILE OPERATING

- According to the height of the tractor drawbar, the disc harrow draw head should be adjusted by taking it into the upper or lower hole.
- During operation, the front and rear batteries sink engage equally to the ground. The upper adjustment arm should be shortened sufficiently if the front batteries are deeper than the rear, and the upper adjustment arm should be extended if the rear batteries are less deeper.
- Keep the travelling speed constant.
- During the operation, it should be continuously turned to the left.
- To change the operation depth, the operation angles of the batteries are reduced and increased. As the operation angle is increased, the depth will also increase. In addition, the operation depth can also be adjusted with the help of wheels. However, in order to reduce the operation depth, when the disc harrow is elevated with the help of the wheels, the front and rear batteries will not work at equal depth, so the balance should be adjusted again from the upper adjustment arm. Because of this, it is difficult and time-consuming to adjust the operation depth with the help of the wheels, so the wheels should be kept at the top level during operation.
- If the disc harrow does not work parallel to the tractor during operation and if there is a side pull, alignment with the adjustment lever located beside the drawing profile should be provided. The adjustment lever should be extended when the disc harrow is pulled to the left, and shortened when it is pulled to the right.
- If the disc harrow is not deep enough, the cross setting should be increased.
- The disc harrow can be inserted directly into the field or can be operated after the plough. If the field is treated directly with disc harrow, the operation angle should be set to maximum. If it is to be operated after ploughing, as the soil will be too deep and swollen, when the operation angle is set too high, the disc harrow will sink too deep and the process will be very difficult for the tractor. In such cases, the operation angle should be adjusted to a lesser degree.
- If the disc harrow is inserted directly into the field, the operation angle should be maximum at the first time if the soil will be treated for more than one layers and the operation angle may be reduced considering the soil structure in the second and third times.

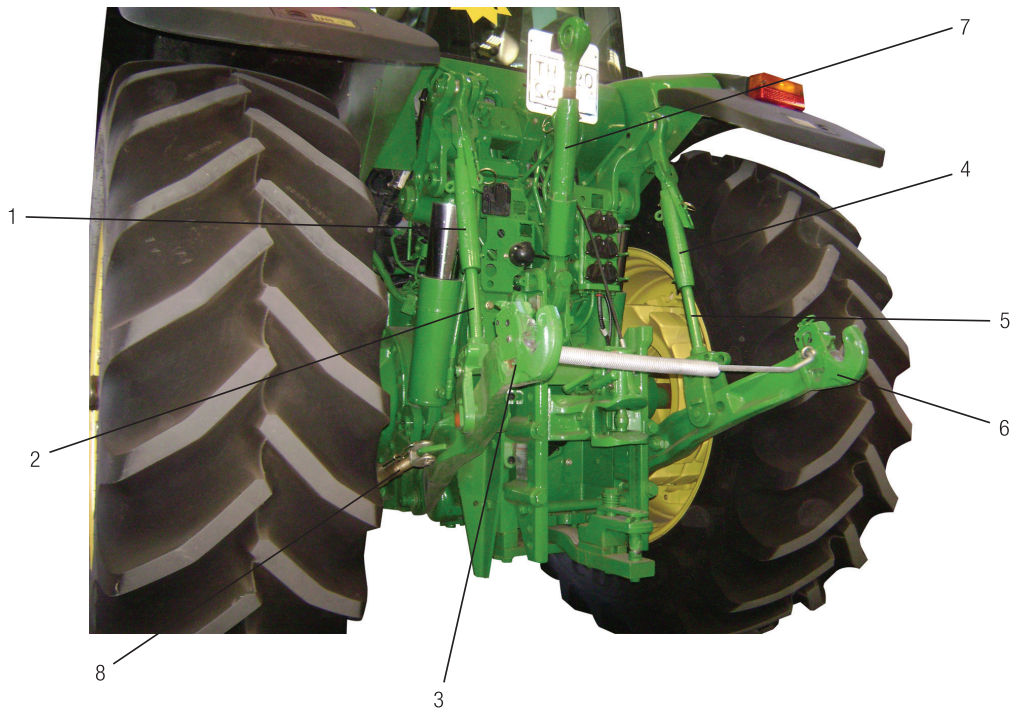
2. SAFETY RULES

2.2. GENERAL RULES TO BE OBSERVED

- While selecting disc harrow, take into account the tractor power and the soil structure, where the disc harrow will be used.
- Move slowly and carefully under poor land and road conditions.
- Do not attach additional non-original equipment to the disc harrow.
- Never perform welding on the disc harrow, replace the damaged part with an original one.
- Any maintenance or repair to be performed on the disc harrow should be carried out by specialized and trained people.

3. SETTINGS

3.1. TRACTOR PREPARATION

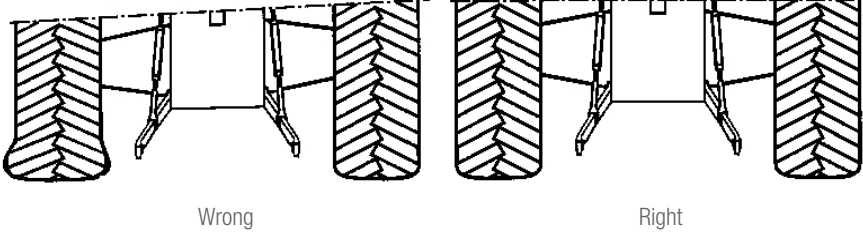


1. Left lower link arm height adjustment mechanism
2. Left lower link arm height adjustment lever
3. Left lower link arm
4. Right lower link arm height adjustment mechanism

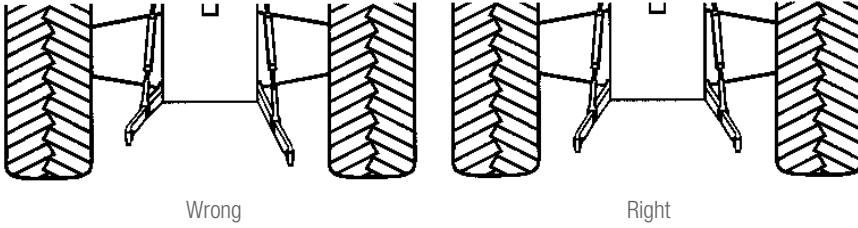
5. Right lower link arm height adjustment lever
6. Right lower link arm
7. Upper link arm (Middle arm)
8. Right lower link arm tensioning mechanism

3. SETTINGS

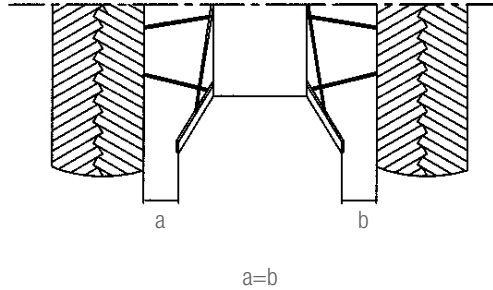
- Air in the right and left wheels of the tractor should be adjusted equally.



- Right and left link arms of the tractor must be adjusted to equal height from the ground.



- Right and left link arms of the tractor must be adjusted to equal distance from the wheels.



- Attach sufficient load to the front wheels of the tractor, or to the front load attachment location, if any (Refer to the tractor operating manual).
- If there is a possibility for tow hook or dovetail to block the hydraulic leveling plow, shift it to the side, or remove them if necessary (Refer to the tractor operating manual).
- To prevent skidding, you can attach load to the rear wheels of the tractor or fill water (Refer to the tractor operating manual).
- Wheel air may be 1-2 pound(s) lower than the normal to prevent skidding during leveling.

3. SETTINGS

3.2. ASSEMBLY OF THE DISC HARROW TO THE TRACTOR

- Take the tractor closer to the disc harrow properly.
- The disc harrow draw head is connected to the tractor drawbar with a solid pin of an appropriate diameter and the draw pin is fixed by a spring pin.
- The hydraulic hoses, which will move the wheel systems of the disc harrow, are attached to the tractor hydraulic outlets. The hydraulic outlets to which the hoses are fitted should be return type and couple.
- Do not move the tractor without being sure that the disc harrow is completely fixed to the tractor and the necessary precautions are taken.

3.3. DISASSEMBLY OF THE DISC HARROW FROM THE TRACTOR

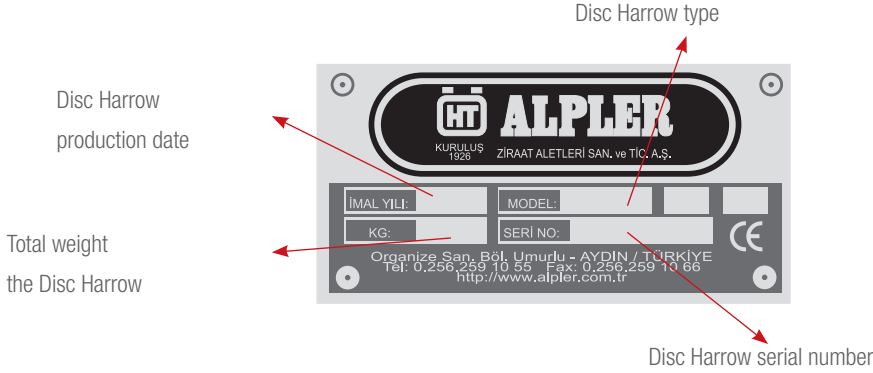
- Take the disc harrow to a suitable location.
- With the help of tractor hydraulics, the wheels of disc harrow are detached from the ground and the draw pin is removed by ensuring that the disc harrow draw head is in the middle of the tractor draw and it is idle.
- The hydraulic hoses connected to the wheel system are detached from the tractor after their pressure has been removed and they are fitted onto the disc harrow so that the jacks on the hose end do not get dirty.
- Do not move the tractor without being sure that the disc harrow is completely detached from the tractor.

3.4. DISC HARROW MAINTENANCE

- Check the bolts and nuts after each operation; tighten the loose ones, and replace the missing ones with original spare parts.
- All parts on the disc harrow should be checked frequently; aged, worn and obsolete parts should be replaced with genuine ones.
- The places to be greased on the disc harrow should be greased in the specified periods. The air intake plugs should be removed when grease is pumped to the bearings.
- Clean the soil and plant residues on the disc harrow if it will not be used for a long time. Worn painted places on the disc harrow should be painted. Areas that come into contact with the soil should be lubricated.
- In case of a need to replace a part on the disc harrow for any reason, they should definitely be replaced with genuine ones.

NOTE: IF YOU HAVE ANY PROBLEM WITH YOUR DISC HARROW, PLEASE ASK FOR HELP FROM OUR DEALER WHERE YOU BOUGHT YOUR DISC HARROW, OUR AUTHORIZED SERVICE OR OUR FACTORY...

4. WARRANTY



Use original spare parts in ALPLER branded products. The customer will be responsible for the problems that occur due to not using original spare parts. The Disc Harrow will not covered by the warranty when non-original parts are installed on the Disc Harrow, additional equipment is attached on the Disc Harrow or it is used after removing standard parts.

While ordering spare parts, for the codes beginning with '0', plough serial number together with the part code should be provided. For other codes, it is not necessary to provide the Disc Harrow serial number.

Label information are important for identifying the Disc Harrow and for spare part orders. As a measure against the illegibility of the label due to deformation or its loss, label information on the Disc Harrow should be written literally in the corresponding fields of the following label picture, and it should be retained.

Our Disc Harrows are **warranted for 2 years** for faults that may occur due to material, workmanship and mounting errors.

Faults resulting from improper use are not covered by the warranty. The average lifetime is 10 years.

4. WARRANTY

WARRANTY CERTIFICATE

Warranted by ALPLER for a period of two years

BRAND: ALPLER

PRODUCT TYPE:

MODEL:

SERIAL NUMBER:

DATE OF PRODUCTION:

Seller's

Title:.....

Address:.....

Phone:.....

Fax:.....

Invoice Date:.....

Signature & Seal



Exports to 75 countries
on 5 continents.



ALPLER AGRICULTURAL MACHINERY

Umurlu Organize Sanayi Bölgesi Umurlu-AYDIN / TÜRKİYE

Tel: +90 (256) 259 1055

Fax: +90 (256) 259 1066

Web: www.alpler.com.tr

E-mail: alpler@alpler.com.tr