



SUBSOILER

USER GUIDE



 **ALPLER**

ATTENTION



**DO NOT
OPERATE THE MACHINES
BEFORE READING THIS MANUEL!**

INDEX

1. INTRODUCTION	3
2. SAFETY RULES	4
2.1. POINTS TO CONSIDER WHILE SELECTING SUBSOILER	4
2.2. GENERAL RULES TO BE OBSERVED	4
3. SETTINGS	5-7
3.1. TRACTOR PREPARATION	5
3.2. ASSEMBLY OF THE SUBSOILER TO THE TRACTOR	6
3.3. ADJUSTMENTS TO BE PERFORMED BEFORE PLOUGHING	7
3.4. DISASSEMBLY OF THE SUBSOILER FROM THE TRACTOR	7
3.5. SUBSOILER MAINTENANCE	7
4. WARRANTY	8

WARNING SIGNS & MEANINGS



CAUTION

This sign warns that the operations described could cause damage to machine, if they are not carried out correctly.



READ MANUAL FIRST

Read the "Operating and Maintenance Manual" carefully before first start and keep the manual nearest.



WARNING

This sign warns that the operations described could cause serious lesions or long term health risks, if they are not carried out correctly.



KEEP CHILDREN AWAY

This symbol expresses to keep the children away against any risk.



Be careful against danger of entrapment.



DO NOT STAND NEAR THE MACHINE WHILE IT IS WORKING

This symbol expresses not to stand near the machine while it is working to avoid any injury.



Do not carry people or loads on the plough.

1. INTRODUCTION

Dear Farmer,

Firstly, we congratulate you for your correct preference on the way to efficiency by selecting the brand "ALPLER". As your agricultural partner, we offer you our product in which we combined high quality, low operational cost and effective after-sale service concept.

All of "ALPLER" products are designed for the most efficient and the safest use and tested accordingly in cooperation with the relevant university departments, agricultural establishments and farmers. We request you to read the user manual before the first operation in order to use our product in a more effective manner as well as for product and your own safety. The failures that may result from using the product beyond the instructions for use specified in this manual are not covered by "ALPLER" warranty. "ALPLER" products are manufactured for agricultural utilization purposes only, and our company does not assume any liability against the conditions arising from misuse. Maintenance, repair and operation of our products must be carried out by those who were informed on the relevant and possible dangers.

Enjoy your new product and we wish you productive and fruitful years.

We hope to serve you for a long time...



CAUTION

If the product owner changes in the future, please submit this manual to the new owner of the product and inform on safety measures.

2. SAFETY RULES

- Be careful against danger of entrapment while attaching/detaching the Subsoiler to/from the tractor; do not stand between the Subsoiler and tractor
- Do not move the tractor without being sure that Subsoiler is completely attached to the tractor, and it is completely detached from tractor while detaching.
- Do not carry people or loads on the Subsoiler.
- While the Subsoiler is transported on the road, the tractor hydraulics should be in the locked position.
- When the Subsoiler is elevated, do not stand under it.
- Be careful against the pointed and sharp edges on the Subsoiler.
- Front hydraulic selector should be in position control while attaching/detaching the Subsoiler, in draw control during operation and in locking position during transportation.
- Be careful against danger of tipping over of the tractor while working on sloping lands.
- While turning, maximum area to which the Subsoiler can reach should be considered.
- If the Subsoiler is to be transported at long distances, it should be transported on the trailer.
- The Subsoiler should be loaded and unloaded with a hoist or crane when loaded on the trailer and unloaded from the trailer.
- Attachment/detachment of the Subsoiler should be carried out with a helper if possible, if not, apply handbrake while getting off the tractor.
- While transporting the Subsoiler on the highways, observe applicable traffic rules and be more careful.
- If any maintenance or repairs are to be made on the Subsoiler, the necessary safety precautions should be taken.

2.1. POINTS TO CONSIDER WHILE SELECTING SUBSOILER

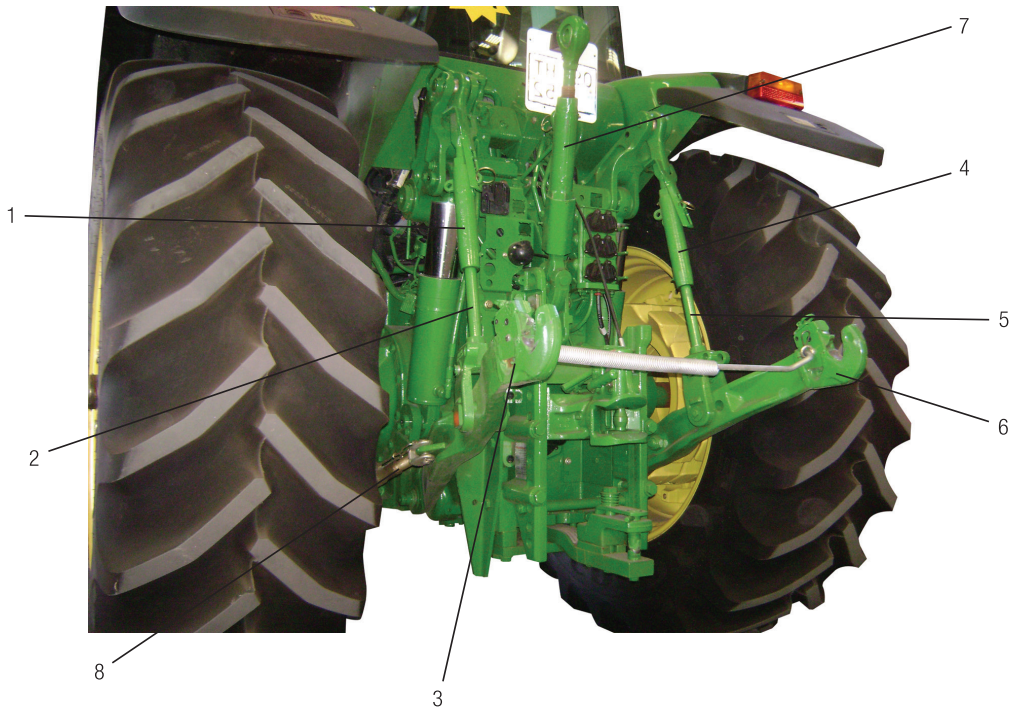
- The power of the tractor to be used must match the power requirement of the Subsoiler.
- The soil structure where the Subsoiler will be used should be considered.

2.2. GENERAL RULES TO BE OBSERVED

- While selecting Subsoiler, take into account the tractor power and the soil structure, where the Subsoiler will be used.
- Move slowly and carefully under poor land and road conditions.
- Do not use the Subsoiler for root removal, rock removal, etc. on the land, use only for ploughing.
- Do not make any maneuver while the Subsoiler is inside the soil.
- Do not attach additional non-original equipment to the Subsoiler.
- Never perform welding on the Subsoiler, replace the damaged part with an original one.

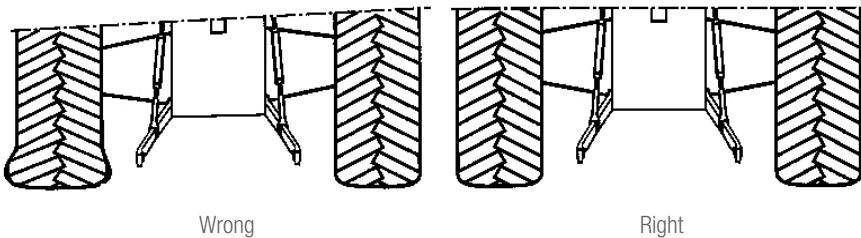
3. SETTINGS

3.1. TRACTOR PREPARATION



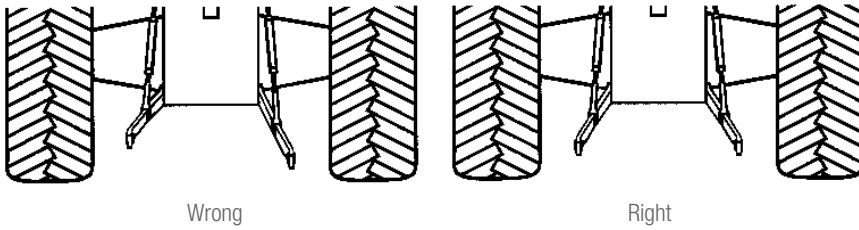
1. Left lower link arm height adjustment mechanism
2. Left lower link arm height adjustment lever
3. Left lower link arm
4. Right lower link arm height adjustment mechanism
5. Right lower link arm height adjustment lever
6. Right lower link arm
7. Upper link arm (Middle arm)
8. Right lower link arm tensioning mechanism

- Air in the right and left wheels of the tractor should be adjusted equally.

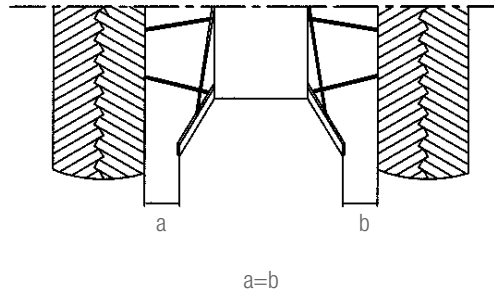


3. SETTINGS

- Right and left link arms of the tractor must be adjusted to equal height from the ground.



- Right and left link arms of the tractor must be adjusted to equal distance from the wheels.



- Attach sufficient load to the front wheels of the tractor, or to the front load attachment location, if any (Refer to the tractor operating manual).
- If there is a possibility for tow hook or dovetail to block the Subsoiler, shift it to the side, or remove them if necessary (Refer to the tractor operating manual).
- To prevent skidding, you can attach load to the rear wheels of the tractor or fill water (Refer to the tractor operating manual).
- Wheel air may be 1-2 pound(s) lower than the normal to prevent skidding during leveling.

3.2. ASSEMBLY OF THE SUBSOILER TO THE TRACTOR

- Shift the hydraulic front selector to "POSITION CONTROL".
- Take the tractor closer to the Subsoiler properly.
- If one of the tractor lower link arms is adjusted and the other is not, insert the unadjusted lower link arm, adjusted lower link arm and finally the upper link arm respectively, and secure them with safety pin. If both link arms are adjusted, it is not important which one is attached first.
- While the Subsoiler is working, tensioning chains or tensioning mechanisms of the link arms are adjusted neither too tight nor too loose.
- Do not move the tractor without being sure that the Subsoiler is completely fixed to the tractor and the necessary precautions are taken.

3. SETTINGS

3.3. ADJUSTMENTS TO BE PERFORMED BEFORE PLOUGHING

- While ploughing, the upper link arm should be straight or inclined towards the tractor while the Subsoiler is inside the soil. This adjustment can be done by changing the height options at the Subsoiler head and tractor upper link point.
- The tractor upper link arm should be extended and shortened so that the front and rear of the plough chassis are equally spaced from the ground during ploughing.
- During ploughing, the upper link arm should be straight or inclined towards the tractor when the Subsoiler is in the soil. This adjustment can be done by changing the height options at the plough coupling head and tractor upper link arm.
- When ploughing, the plough should be equally spaced from both tension arms (or chains) so that it can swing to the left and right.

3.4. DISASSEMBLY OF THE SUBSOILER FROM THE TRACTOR

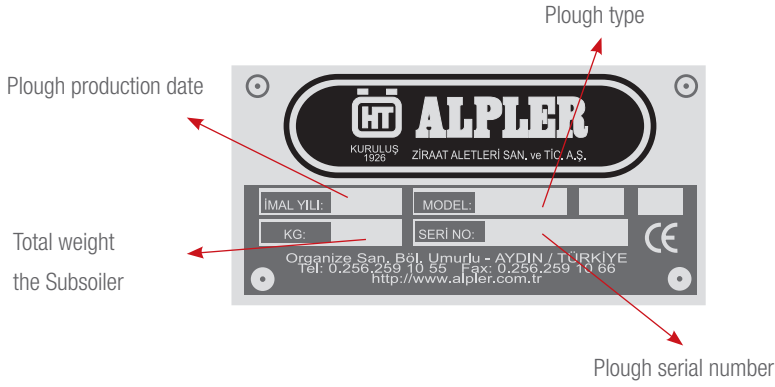
- Take the Subsoiler to a suitable location.
- Shift the hydraulic front selector to "POSITION CONTROL", and the Subsoiler is lowered to the ground.
- Remove the upper link arm, adjusted lower link arm and unadjusted lower link arm respectively.
- Do not move the tractor without being sure that the Subsoiler is completely detached from the tractor.

3.5. SUBSOILER MAINTENANCE

- Clean the soil and plant residues on the Subsoiler after each ploughing work.
- Before every ploughing work and at the end of every 10 hours of operation, all grease nipples marked with labels on the plough should be greased sufficiently.
- Check the bolts and nuts after each ploughing work; tighten the loose ones, and replace the missing ones with original spare parts suiting to the holes.
- In the seasons when the plough will not work, the plough should be stored in a closed warehouse.
- If the plough will not be used for a long time, all glossy surface should be protected against rust by coating with protective oil or grease.
- Frequently check the plough parts contacting to soil, replace the worn parts with new original ones.
- All grease nipples on the plough should be greased after each work until the clean oil comes out of the bearings.
- While lowering the plough to the ground, do not release it suddenly; it should be lowered slowly and carefully.

NOTE: IN CASE OF A PROBLEM WITH YOUR SUBSOILER, DON'T HESITATE TO ASK FOR HELP IN OUR AUTHORIZED SERVICES ...

4. WARRANTY



Use original spare parts in ALPLER branded products. The customer will be responsible for the problems that occur due to not using original spare parts. The subsoiler will not covered by the warranty when non-original parts are installed on the subsoiler, additional equipment is attached on the subsoiler or it is used after removing standard parts.

While ordering spare parts, for the codes beginning with '0', plough serial number together with the part code should be provided. For other codes, it is not necessary to provide the subsoiler serial number.

Label information are important for identifying the subsoiler and for spare part orders. As a measure against the illegibility of the label due to deformation or its loss, label information on the subsoiler should be written literally in the corresponding fields of the following label picture, and it should be retained.

Our ploughs are **warranted for 2 years** for faults that may occur due to material, workmanship and mounting errors.

Faults resulting from improper use are not covered by the warranty. The average lifetime is 10 years.

4. WARRANTY

WARRANTY CERTIFICATE

Warranted by ALPLER for a period of two years

BRAND: ALPLER
PRODUCT TYPE:
MODEL:
SERIAL NUMBER:
DATE OF PRODUCTION:

Seller's

Title:.....
Address:.....
Phone:.....
Fax:.....
Invoice Date:.....

Signature & Seal



Exports to 75 countries
on 5 continents.

 **ALPLER**

ALPLER AGRICULTURAL MACHINERY

Umurlu Organize Sanayi Bölgesi Umurlu-AYDIN / TÜRKİYE

Tel: +90 (256) 259 1055 Fax: +90 (256) 259 1066

Web: www.alpler.com.tr E-mail: alpler@alpler.com.tr