



SLASHER

(SAP 1500T / SAP 1500C / SAP 1800T / SAP 1800C)

USER GUIDE



HT ALPLER

ATTENTION



**DO NOT
OPERATE THE MACHINES
BEFORE READING THIS MANUEL!**

INDEX

1. INTRODUCTION	3
2. SAFETY RULES	4
3. SETTINGS	4
3.1. POINTS TO BE OBSERVED DURING TRANSPORTATION	4
3.2. TRACTOR PREPARATION	5
3.3. ASSEMBLY OF THE MACHINE TO THE TRACTOR	6
3.4. FEATURES AND INTENDED USE OF THE MACHINE	6
3.5. POINTS TO BE CONSIDERED WHILE SELECTING THE EQUIPMENT	6
3.6. RULES TO BE OBSERVED	6
3.7. WARNINGS ABOUT CONDITIONS THAT MAY BE HARMFUL TO THE HUMAN HEALTH AND THE ENVIRONMENT DURING OPERATION	7
3.8. PREPARATIONS FOR OPERATION	9
3.9. LABEL FEATURES AND READING	9
4. MAINTENANCE	10
4.1. PERIODIC MAINTENANCE INFORMATION, PERIODIC MAINTENANCE TIME INTERVALS, MAINTENANCE PERSONNEL	10
4.2. MAINTENANCE TO BE PERFORMED BY CUSTOMER AND RULES	10
5. REPAIR	10
5.1. RULES TO BE OBSERVED FOR REPAIRS	10
5.2. REPAIRS BY CONSUMER	10
5.3. AFTER SALES SERVICES, SERVICE AND SPARE PARTS	10
6. WARRANTY	11-12

WARNING SIGNS & MEANINGS



CAUTION

This sign warns that the operations described could cause damage to machine, if they are not carried out correctly.



READ MANUAL FIRST

Read the "Operating and Maintenance Manual" carefully before first start and keep the manual nearest.



WARNING

This sign warns that the operations described could cause serious lesions or long term health risks, if they are not carried out correctly.



KEEP CHILDREN AWAY

This symbol expresses to keep the children away against any risk.



Be careful against danger of entrapment.



DO NOT STAND NEAR THE MACHINE WHILE IT IS WORKING

This symbol expresses not to stand near the machine while it is working to avoid any injury.



Use the balance leg against danger of tipping over while detaching the plough from tractor.



Do not carry people or loads on the plough.

1. INTRODUCTION

Dear Farmer,

Firstly, we congratulate you for your correct preference on the way to efficiency by selecting the brand “ALPLER”. As your agricultural partner, we offer you our product in which we combined high quality, low operational cost and effective after-sale service concept.

All of “ALPLER” products are designed for the most efficient and the safest use and tested accordingly in cooperation with the relevant university departments, agricultural establishments and farmers. We request you to read the user manual before the first operation in order to use our product in a more effective manner as well as for product and your own safety. The failures that may result from using the product beyond the instructions for use specified in this manual are not covered by “ALPLER” warranty.

“ALPLER” products are manufactured for agricultural utilisation purposes only, and our company does not assume any liability against the conditions arising from misuse. Maintenance, repair and operation of our products must be carried out by those who were informed on the relevant and possible dangers.

Enjoy your new product and we wish you productive and fruitful years.

We hope to serve you for a long time...



CAUTION

If the product owner changes in the future, please submit this manual to the new owner of the product and inform on safety measures.

2. SAFETY RULES

- Be careful against danger of entrapment while attaching/detaching the machine to/from the tractor; do not stand between the machine and tractor.
- Do not move the tractor without being sure that tractor is completely attached to the tractor while attaching, and it is completely detached from tractor while detaching.
- Do not carry people or loads on the machine.
- While transporting the machine on the road, turn tractor hydraulic to locking position.
- When the machine is elevated, do not stand under it.
- Be careful against the pointed and sharp edges on the machine.
- Front hydraulic selector must be in position control while attaching/detaching the machine, in draw control during operation and in locking position during transportation.
- Be careful against danger of tipping over of the tractor while working on sloping lands.
- While turning, maximum area to which the machine can reach should be considered.
- If the machine is to be transported at long distances, it should be transported on the trailer.
- The machine should be loaded and unloaded with a hoist or crane when loaded on the trailer and unloaded from the trailer.
- Attachment/detachment of the machine should be carried out with a helper if possible, if not, apply handbrake while descending from the tractor.
- While transporting the machine on the highways, observe applicable traffic rules and be more careful.
- The machine and tractor categories should match each other.
- Warning labels on the machine should always be clean and visible. If the warning labels have become worn, lost or illegible for any reason, they should be obtained from our nearest dealer and affixed to their places.

3. SETTINGS

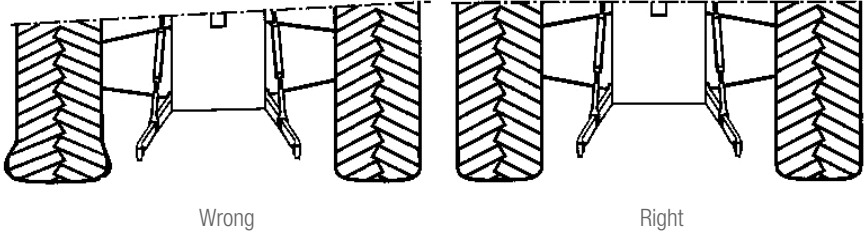
3.1. POINTS TO BE OBSERVED DURING TRANSPORTATION

- The equipment must be attached to the marked suspension points when loading and unloading on the trailer.
- Lift or crane must be used when loading and unloading equipment on the trailer.
- People, goods or loads must not be carried on the equipment.
- When transporting the equipment on roads, the traffic rules must be observed.
- Care must be taken not to damage the equipment.
- Equipment should be maneuvered by taking into account the maximum maneuvering area.
- If the equipment is to be transported over long distances, it must be transported on the trailer.
- Even if the equipment is to be transported over short distances, the safety and cleanliness of the reflector (cat's eye) must be checked.

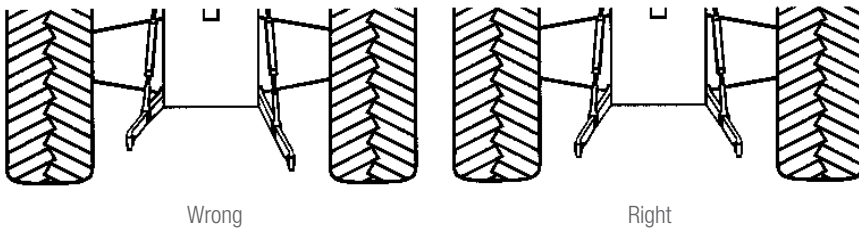
3. SETTINGS

3.2. TRACTOR PREPARATION

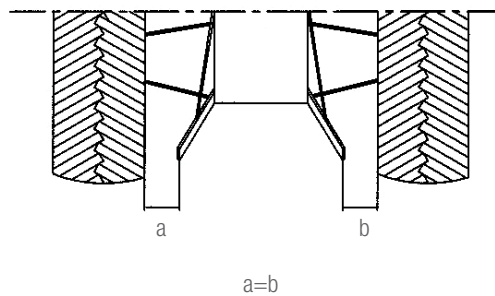
- Air in the right and left wheels of the tractor must be adjusted equally.



- Right and left link arms of the tractor must be adjusted to equal height from the ground.



- Right and left link arms of the tractor must be adjusted to equal distance from the wheels.



- Attach sufficient load to the front wheels of the tractor, or to the front load attachment location, if any (Refer to the tractor operating manual).
- If there is a possibility for tow hook or dovetail to block the plough, shift it to the side, or remove them if necessary (Refer to the tractor operating manual).
- To prevent skidding, you can attach load to the rear wheels of the tractor or fill water (Refer to the tractor operating manual).
- Wheel air may be 1-2 pound(s) lower than the normal to prevent skidding during ploughing .

3. SETTINGS

3.3. ASSEMBLY OF THE MACHINE TO THE TRACTOR

- The machine is delivered as ready for assembly to the tractor out of the factory.
- The machine must be connected to the tractor via a three-point suspension system.
- On a flat surface, the machine approaches the tractor backwards. The height of the tractor hydraulic arms is adjusted from the tractor and is fixed with the appropriate pin to the lower link arms.
- After the machine is connected to the tractor from the three-point suspension system, the shaft is attached to the tractor tail shaft.
- When the machine is connected, the depth should be adjusted to 5-25 cm with the help of depth adjustment plates on the sides. (2.5 cm between the holes.)
- The tractor must not be moved without making sure that the machine is fully fixed to the tractor and taking the necessary safety precautions.
- The steps are applied in reserve while the machine is being separated from the tractor.

3.4. FEATURES AND INTENDED USE OF THE MACHINE

- This product is usually used to break down the stalks of crops such as sunflower, corn and cotton after harvesting in the field.
- Driven by the movement transmitted from the tail shaft of the tractor to the transmission, the moving blades clean the waste.
- This product is produced in two different models as Single and Double Types.

3.5. POINTS TO BE CONSIDERED WHILE SELECTING THE EQUIPMENT

- The power of the tractor to be used must match the power requirements of the equipment.
- The soil structure in which the equipment is to be used must be taken into consideration.

3.6. RULES TO BE OBSERVED

- Work slowly and carefully under poor land and road conditions.
- Do not attach any additional equipment which are not genuine parts on the equipment.
- Never perform welding on the equipment, replace the damaged part with a genuine one.

3. SETTINGS

3.7. WARNINGS ABOUT CONDITIONS THAT MAY BE HARMFUL TO THE HUMAN HEALTH AND THE ENVIRONMENT DURING OPERATION



Risks that cannot be eliminated:

Emergency information: Not applicable.

Type of fire extinguishing equipment: Not applicable.

Hazardous substance leakages, effects and ways of intervention: Not applicable.

Information on personal protective equipment, human and environmental health, special safety precautions to be taken by the user:

TRAFFIC	<ul style="list-style-type: none">• When you assemble your equipment on the tractor and get to the traffic, follow the traffic rules, especially the lighting and necessary protection devices, take the safety precautions. Follow the instructions for safe handling and accident prevention.• Lighting equipment (stop lamps, cat eyes, etc.), which allow the tractor to be seen by other drivers when driving on the road, should always be kept clean and in working order.• During the breaks, a general control must be done on the tractor (tire air pressure and malfunctions, loose nuts, safety pin, traffic lights, etc.).• Attach the signal flag for equipment hanging out of the tractor.
CLOTHES	<ul style="list-style-type: none">• Wear appropriate work clothes. Never wear too loose clothes. They can be caught by rotating and moving parts of the equipment.
EQUIPMENT	<ul style="list-style-type: none">• If you are going to use the equipment for the first time, read all instructions carefully. In case of doubt, consult the manufacturer/importer.• It is forbidden for unauthorized and unskilled third parties to operate and maintain equipment.• Do not operate in poor lighting conditions.• It should not be parked on a sloped ground when not assembled on the tractor, it should be prevented from moving if it is not connected to the tractor.• Do not expose the equipment to excessive stress during operation and maintenance.• When transporting your equipment, make sure that it is lifted from the lifting points indicated on the equipment.• Tractor must be brought close to the equipment in order to perform the connection of the equipment.• Nobody must stand on or in front of the equipment due to danger of tripping in case of movement of the equipment.• Check the protective cover and parts regularly for wear and tear.• Only connect to the specified type of tractors according to the instructions.• Care must be taken while lowering the hydraulic arm, as this may cause a risk of impact when in the danger zone.• Do not handle the moving parts and rotating parts in any way.• Allow the equipment elements to come to a complete stop before touching them.

3. SETTINGS

TRACTOR

- Make sure that the person using the tractor on which your machine is mounted is a licensed (F) and experienced, trained driver.
- Exhaust gas is toxic. Therefore, the tractor should not be operated in inconvenient and closed areas.
- The clutch must be smoothly engaged to move the tractor. Sudden and hard starts can cause dangerous jumps and rearings, especially when driving uphill or when towing.
- When driving downhill, the gear must not be shifted to neutral.
- Never get on/off the tractor while it is moving.
- When entering the road, make sure that the brake pedals are connected to each other (brake latch fitted). Otherwise, the tractor will be sway dangerously during braking.
- Except the operator, when the tractor is in motion, one or more passengers must not be transported unless the tractor is equipped with a seat or seats.
- Tractor front or rear weights should be fitted or tires must be filled with water when assembling equipment on the tractor.
- The tractor must always be used with its own safety frame. The safety frame should be checked from time to time to make sure that the connections are complete, not cracked or broken.
- In very hot weather, the fuel tank should not be fully filled. Expanding volume of fuel in the heat can overflow. Any leakage should be removed and cleaned immediately.
- Do not attempt to start and maneuver the tractor without sitting in the driver's seat.
- Tighten the side chains of the tractor hydraulic arms while driving and returning to the field. The three-point connection safety pins must be fitted. Hydraulic lock must be engaged. The connecting shaft must be removed.
- Please note that the machine connected to the tractor changes some functions of the tractor (braking distance, steering wheel, center of gravity, etc.).
- Especially in machines with suspensions, going to the field, turns and bumps should be entered very slowly.
- The tractor front selection lever must be in "Position Control".
- Check tire pressures before starting and during breaks.
- Slow and careful action should be taken when pulling heavy loads. Only the towing hook must be used for the towing operation. If there is no suitable fastening, the towing operation must not be attempted using the hydraulic lifter, the middle suspension and the side towing arms. Doing so may cause a rearing.
- Connect your machine to the appropriate type of tractors specified in the operating instructions with suitable pulling force and hydraulic lifting equipment.
- The control device must be in the "0" position before connecting and disconnecting on suspension type machines.
- The category of your machine and tractor three-point suspension must be the same.
- Before connecting the machine to the tractor, apply the parking brake of the tractor, and shift the gear to neutral.
- Be very careful when connecting the machine to the tractor and disconnecting it.
- During the connection of the machine to the tractor, there must be no one between the machine and the tractor against the danger of crushing, entrapping, cutting and breaking.
- Start working after taking all safety precautions on your machine and tractor.
- If your tractor is running, never leave the driver's seat.
- Be careful with the danger of tipping over when working on slopes.
- Precautions should be taken to prevent hazards that may arise from changing center of gravity during loading and unloading.

3. SETTINGS

<h2>TRACTOR</h2>	<ul style="list-style-type: none">• It must not be driven backwards during operation.• Lower the machine attached to the hydraulics before leaving the tractor. After turning off the engine, apply the parking brake. Remove the ignition key.• Make adjustments and repairs on your machine only when the tractor engine is turned off and the wheels are wedged. Before starting maintenance, adjustment or repair, take the tractor's ignition key with you.• Ensure that it is completely lowered to the ground before leaving the equipment attached to the rear of the tractor after the work.• If possible, the tractor should be parked in a level ground, in which case it must be engaged in one of the gears and the parking brake applied. If parked on a sloping ground, it must be shifted to first gear uphill, reverse gear downhill, and in both cases the parking brake must be applied. Especially if the trailer is attached to the tractor, the wheels must be wedged for extra safety.
<h2>ENVIRONMENT</h2>	<ul style="list-style-type: none">• Before operating the tractor and the machine, make sure that there are no other persons, especially children and pets around the machine, and take the necessary precautions so that you can see the surroundings.• Field obstacles should be disposed of by paying attention to waste materials such as tree roots, waste, nylon, etc.• It must not be used in the fields with many stones.• Do not approach the machine during operation, do not allow anyone to approach.• Correct operation must be done against erosion hazard.• Do not eat or drink something while working.

3.8. PREPARATIONS FOR OPERATION

Check the tightness of the bolts before entering the field.

3.9. LABEL FEATURES AND READING

- Our product identification labels are written on aluminium sheet with ALPLER ZİRAAT ALETLERİ SAN. ve Tic. A.Ş. emblem with dot matrix marking method.
- The label is fixed on the right suspension arm of the product.
- The label details are as follows.
- The life of the label is as much as the life of the equipment.
- If the label is broken or scratched, record the label information

4. MAINTENANCE

4.1. PERIODIC MAINTENANCE INFORMATION, PERIODIC MAINTENANCE TIME INTERVALS, MAINTENANCE PERSONNEL

- Lubricate the grease nipples.
- Renew the mouths of the worn tip bars.
- Periodic maintenance of the equipment will be carried out by the consumer.

4.2. MAINTENANCE TO BE PERFORMED BY CUSTOMER AND RULES

- When you complete the maintenance, clean the equipment from the plant and soil.
- Lubricate the grease nipples.
- Keep your equipment in a closed area against corrosion.

5. REPAIR

5.1. RULES TO BE OBSERVED FOR REPAIRS

Any repairs other than the consumer's own repairs will take the defective part out of the warranty. Failure to use original spare parts during the repair takes the part out of the warranty and damages to the human and environmental health arising from this situation are under the responsibility of the consumer.

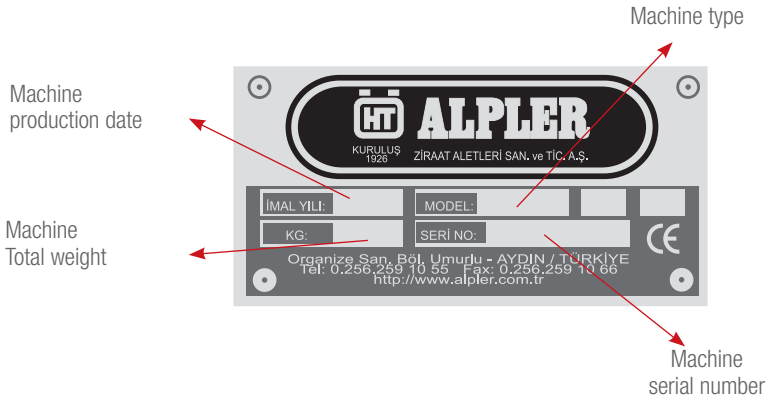
5.2. REPAIRS BY CONSUMER

- Replacing the grease nipple.
- Replacing spring pin.
- Tightening loose bolts.

5.3. AFTER SALES SERVICES, SERVICE AND SPARE PARTS

You can contact our company's address below for after-sales services and spare parts supply.

6. WARRANTY



Use original spare parts in ALPLER branded products. The customer will be responsible for the problems that occur due to not using original spare parts. The Stalk Cutter will not be covered by the warranty when non-original parts are installed on the machine, additional equipment is attached on the machine or it is used after removing standard parts.

While ordering spare parts, for the codes beginning with '0', machine serial number together with the part code should be provided. For other codes, it is not necessary to provide the machine serial number.

Label information is important for identifying the machine and for spare part orders. As a measure against the illegibility of the label due to deformation or its loss, label information on the machine should be written literally in the corresponding fields of the following label picture, and it should be retained.

Our Stalk Cutters are **warranted for 2 years** for faults that may occur due to material, workmanship and mounting errors.

Faults resulting from improper use are not covered by the warranty. The average lifetime is 10 years.

6. WARRANTY

WARRANTY CERTIFICATE

Warranted by ALPLER for a period of two years

BRAND: ALPLER
PRODUCT TYPE:
MODEL:
SERIAL NUMBER:
DATE OF PRODUCTION:

Seller's

Title:.....
Address:.....
Phone:.....
Fax:.....
Invoice Date:.....

Signature & Seal





Exports to 75 countries
on 5 continents.

 **ALPLER**

ALPLER AGRICULTURAL MACHINERY

Umurlu Organize Sanayi Bölgesi Umurlu-AYDIN / TÜRKİYE

Tel: +90 (256) 259 1055 Fax: +90 (256) 259 1066

Web: www.alpler.com.tr E-mail: alpler@alpler.com.tr