



# MOUNTED & TRAILED V-TYPE DISC HARROW

## USER GUIDE



ATTENTION



**DO NOT  
OPERATE THE MACHINES  
BEFORE READING THIS MANUEL!**

# INDEX

1. INTRODUCTION	3
2. SAFETY RULES	4
2.1. POINTS TO CONSIDER WHILE SELECTING DISC HARROW	4
2.2. GENERAL RULES TO BE OBSERVED	4
3. SETTINGS	5-7
3.1. TRACTOR PREPARATION	5
3.2. ASSEMBLY OF THE DISC HARROW TO THE TRACTOR	6
3.3. POINTS TO CONSIDER WHILE OPERATING	7
3.4. DISASSEMBLY OF THE DISC HARROW FROM THE TRACTOR	7
3.5. DISC HARROW MAINTENANCE	7
4. WARRANTY	8

# WARNING SIGNS & MEANINGS



## CAUTION

This sign warns that the operations described could cause damage to machine, if they are not carried out correctly.



## READ MANUAL FIRST

Read the "Operating and Maintenance Manual" carefully before first start and keep the manual nearest.



## WARNING

This sign warns that the operations described could cause serious lesions or long term health risks, if they are not carried out correctly.



## KEEP CHILDREN AWAY

This symbol expresses to keep the children away against any risk.



Be careful against danger of entrapment.



## DO NOT STAND NEAR THE MACHINE WHILE IT IS WORKING

This symbol expresses not to stand near the machine while it is working to avoid any injury.



Do not carry people or loads on the plough.



Locations which need to be greased in each use.

# 1. INTRODUCTION

Dear Farmer,

Firstly, we congratulate you for your correct preference on the way to efficiency by selecting the brand "ALPLER". As your agricultural partner, we offer you our product in which we combined high quality, low operational cost and effective after-sale service concept.

All of "ALPLER" products are designed for the most efficient and the safest use and tested accordingly in cooperation with the relevant university departments, agricultural establishments and farmers. We request you to read the user manual before the first operation in order to use our product in a more effective manner as well as for product and your own safety. The failures that may result from using the product beyond the instructions for use specified in this manual are not covered by "ALPLER" warranty. "ALPLER" products are manufactured for agricultural utilization purposes only, and our company does not assume any liability against the conditions arising from misuse. Maintenance, repair and operation of our products must be carried out by those who were informed on the relevant and possible dangers.

Enjoy your new product and we wish you productive and fruitful years.

We hope to serve you for a long time...



## CAUTION

If the product owner changes in the future, please submit this manual to the new owner of the product and inform on safety measures.

# 2. SAFETY RULES

- Be careful against danger of entrapment while attaching/detaching the cultivator to/from the tractor; do not stand between the cultivator and tractor.
- Do not move the tractor without being sure that cultivator is completely attached to the tractor, and it is completely detached from tractor while detaching.
- Do not carry people or loads on the cultivator.
- While transporting the cultivator on the road, turn tractor hydraulic to locking position.
- When the cultivator is elevated, do not stand under it.
- Be careful against the pointed and sharp edges on the cultivator.
- Front hydraulic selector must be in position control while attaching/detaching the cultivator, in draw control during operation and in locking position during transportation.
- Be careful against danger of tipping over of the tractor while working on sloping lands.
- While turning, maximum area to which the cultivator can reach should be considered.
- If the cultivator is to be transported at long distances, it should be transported on the trailer.
- The cultivator should be loaded and unloaded with a hoist or crane when loaded on the trailer and unloaded from the trailer.
- Attachment/detachment of the cultivator should be carried out with a helper if possible, if not, apply handbrake while getting off the tractor.
- While transporting the cultivator on the highways, observe applicable traffic rules and be more careful.
- If any maintenance or repairs are to be made on the cultivator, the cultivator should be leveled and completely lowered to the ground, and the necessary safety precautions should be taken.
- Maintenance and repairs to be made on cultivator should be carried out by trained specialists who are familiar with safety precautions.
- The cultivator and tractor categories should match each other.
- Warning labels on the cultivator should always be clean and visible. If the warning labels have become worn, lost or illegible for any reason, they should be obtained from our nearest dealer and affixed to their places.

## 2.1. POINTS TO CONSIDER WHILE SELECTING DISC HARROW

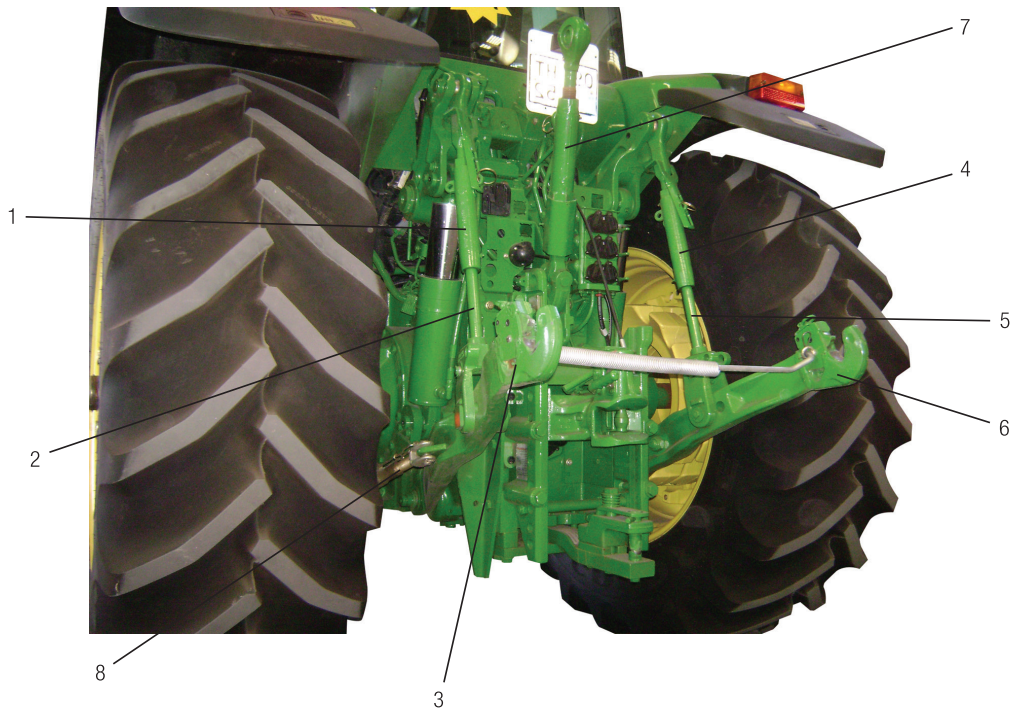
- The power of the tractor to be used must match the power requirement of the disc harrow.
- The soil structure where the disc harrow will be used should be considered.

## 2.2. GENERAL RULES TO BE OBSERVED

- Move slowly and carefully under poor land and road conditions.
- The disc harrow should not be maneuvered back while in the ground.
- Do not attach additional non-original equipment to the disc harrow.
- Never perform welding on the disc harrow, replace the damaged part with an original one.
- The disc harrow should be operated by turning left continuously during operation in the field.

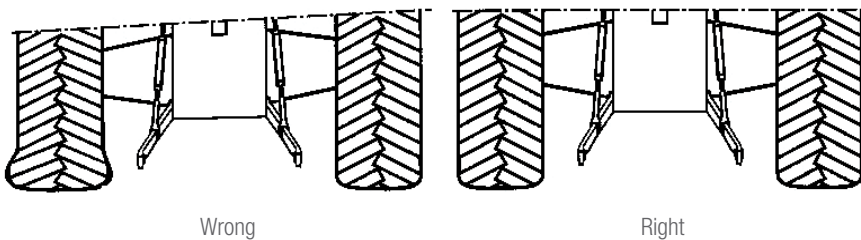
# 3. SETTINGS

## 3.1. TRACTOR PREPARATION



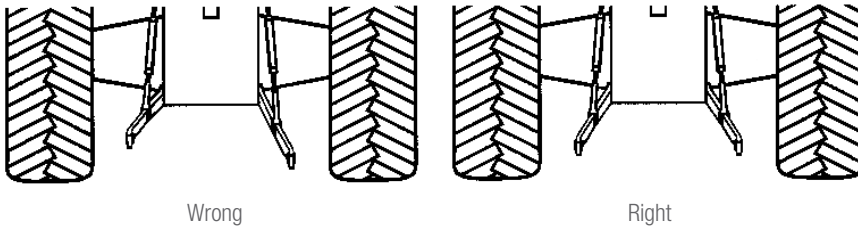
1. Left lower link arm height adjustment mechanism
2. Left lower link arm height adjustment lever
3. Left lower link arm
4. Right lower link arm height adjustment mechanism
5. Right lower link arm height adjustment lever
6. Right lower link arm
7. Upper link arm (Middle arm)
8. Right lower link arm tensioning mechanism

- Air in the right and left wheels of the tractor should be adjusted equally.

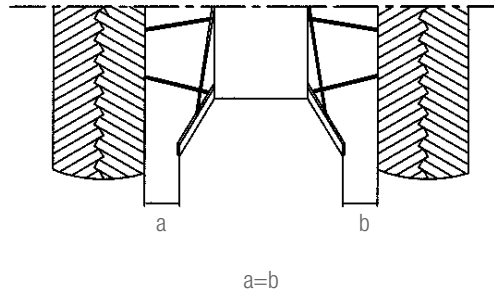


# 3. SETTINGS

- Right and left link arms of the tractor must be adjusted to equal height from the ground.



- Right and left link arms of the tractor must be adjusted to equal distance from the wheels.



- Attach sufficient load to the front wheels of the tractor, or to the front load attachment location, if any (Refer to the tractor operating manual).
- If there is a possibility for tow hook or dovetail to block the hydraulic leveling plow, shift it to the side, or remove them if necessary (Refer to the tractor operating manual).
- To prevent skidding, you can attach load to the rear wheels of the tractor or fill water (Refer to the tractor operating manual).
- Wheel air may be 1-2 pound(s) lower than the normal to prevent skidding during leveling.

## 3.2. ASSEMBLY OF THE DISC HARROW TO THE TRACTOR

- Tractor hydraulic side link arms are raised to the top level.
- Take the tractor closer to the disc harrow properly.
- The disc harrow draw head is attached to the tractor drawbar with a suitable pin.
- Tractor drawbar is adjusted in such a way that it does not hit the disc harrow while operating. Disassembled if necessary.
- The hydraulic hoses are installed in the same group of pressure and return lines in the tractor hydraulic system.
- Do not move the tractor without being sure that the disc harrow is completely fixed to the tractor and the necessary precautions are taken.



# 3. SETTINGS

## 3.3. POINTS TO CONSIDER WHILE OPERATING

- During the operation the wheels should be fully raised.
- The front and rear of the chassis should be set at equal height during the operation.
- Care should be taken against the possibility of obstacles such as rocks and roots that do not appear in the soil during the operation.
- Keep the travelling speed constant.
- The operation angle should be kept constant during the operation.
- During operation, the disc harrow should not be maneuvered back while in the ground.
- During the operation, it should be continuously turned to the left.
- In the operation, the previous line should be in your left during the process.
- When the operation angle is increased, the operation depth will increase and when the operation angle is reduced, the operation depth will decrease.

## 3.4. DISASSEMBLY OF THE DISC HARROW FROM THE TRACTOR

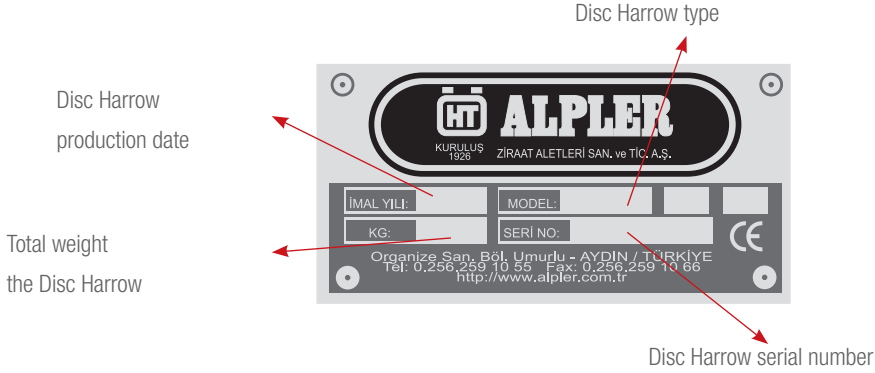
- Take the disc harrow to a suitable location.
- The wheels are raised so that the disc harrow draw head can be in the idle position in the tractor drawbar.
- The draw pin is removed.
- Hydraulic hoses are removed from the tractor.
- Do not move the tractor without being sure that the disc harrow is completely detached from the tractor.

## 3.5. DISC HARROW MAINTENANCE

- The areas to be greased on the disc harrow should be definitely greased before and after each use.
- Check the bolts and nuts after each operation; tighten the loose ones, and replace the missing ones with original spare parts.
- All parts on the disc harrow should be checked frequently; aged, worn and obsolete parts should be replaced with genuine ones.
- Clean the soil and plant residues on the disc harrow after each use.
- In case of a need to replace a part on the disc harrow for any reason, they should definitely be replaced with genuine ones.

**NOTE:** IF YOU HAVE ANY PROBLEM WITH YOUR DISC HARROW, PLEASE ASK FOR HELP FROM OUR DEALER WHERE YOU BOUGHT YOUR DISC HARROW, OUR AUTHORIZED SERVICE OR OUR FACTORY...

# 4. WARRANTY



Use original spare parts in ALPLER branded products. The customer will be responsible for the problems that occur due to not using original spare parts. The Disc Harrow will not covered by the warranty when non-original parts are installed on the Disc Harrow, additional equipment is attached on the Disc Harrow or it is used after removing standard parts.

While ordering spare parts, for the codes beginning with '0', plough serial number together with the part code should be provided. For other codes, it is not necessary to provide the Disc Harrow serial number.

Label information are important for identifying the Disc Harrow and for spare part orders. As a measure against the illegibility of the label due to deformation or its loss, label information on the Disc Harrow should be written literally in the corresponding fields of the following label picture, and it should be retained.

Our Disc Harrows are **warranted for 2 years** for faults that may occur due to material, workmanship and mounting errors.

Faults resulting from improper use are not covered by the warranty. The average lifetime is 10 years.

# 4. WARRANTY

## WARRANTY CERTIFICATE

Warranted by ALPLER for a period of two years

BRAND: ALPLER  
PRODUCT TYPE:  
MODEL:  
SERIAL NUMBER:  
DATE OF PRODUCTION:

### Seller's

Title:.....  
Address:.....  
Phone:.....  
Fax:.....  
Invoice Date:.....

Signature & Seal



Exports to 75 countries  
on 5 continents.

 **ALPLER**

**ALPLER AGRICULTURAL MACHINERY**

Umurlu Organize Sanayi Bölgesi Umurlu-AYDIN / TÜRKİYE

Tel: +90 (256) 259 1055 Fax: +90 (256) 259 1066

Web: [www.alpler.com.tr](http://www.alpler.com.tr) E-mail: [alpler@alpler.com.tr](mailto:alpler@alpler.com.tr)