



FINGER WHEEL RAKE WITH 4 RAKES

USER GUIDE



ATTENTION



**DO NOT
OPERATE THE MACHINES
BEFORE READING THIS MANUEL!**

INDEX

WARNING SIGNS AND MEANINGS	2
1. INTRODUCTION	3-5
1.1. INTRODUCTORY AND BASIC INFORMATION ABOUT THE MACHINE SPECIFICATIONS	3
1.2. CONNECTIONS OF THE MACHINE	3-4
1.3. SAFETY INSTRUCTIONS TO BE TAKEN BY THE USER	5
2. TECHNICAL SPECIFICATIONS	6
3. INFORMATIONS ABOUT THE PERSONAL PROTECTIVE EQUIPMENT, INFORMATIONS ABOUT HUMAN AND ENVIRONMENTAL HEALTH, SPECIAL SAFETY INFORMATIONS TO BE TAKEN BY THE USER	6
4. THINGS TO BE CAREFUL OF WHILE OPERATING THE MACHINE	7
4.1. BEFORE OPERATING	7
4.2. WHILE OPERATING	7
4.3. AFTER OPERATING	7
5. PRELIMINARY PREPERATIONS, SETTINGS AND INSTRUCTIONS TO BE FOLLOWED TO OPERATE THE MACHINE	8-9
5.1. ADJUSTMENT INSTRUCTIONS	8
5.2. PERIODIC MAINTENANCE INFORMATIONS, TO BE FOLLOWED RULES, TIME PERIOD OF THE PERIODIC MAINTENANCE, INFORMATIONS OF THE MAINTENANCE TO BE MADE BY WHO	8
6. TROUBLESHOOTING	10
6.1. TO BE FOLLOWED RULES ABOUT TROUBLESHOOTING	10
6.2. TROUBLESHOOTING TO BE TAKEN BY CONSUMER	10
6.3. PROVIDING SERVICES CENTERS	10
7. WARRANTY CONDITIONS	11
8. WARRANTY	12-13

WARNING SIGNS & MEANINGS



CAUTION

This sign warns that the operations described could cause damage to machine, if they are not carried out correctly.



WARNING

This sign warns that the operations described could cause serious lesions or long term health risks, if they are not carried out correctly.



DANGER

This sign warns that the operations described could cause serious lesions, death or long term health risks, if they are not carried out correctly.



READ MANUAL FIRST

Read the "Operating and Maintenance Manual" carefully before first start and keep the manual nearest.



USE GLOVES

This symbol expresses the requirement of using gloves for the safety during the run-time.



REVOLVING DEVICE

This symbol expresses the risk of catching and gripping of revolving devices.



THE RISK OF FALLING DOWN

This symbol expresses the risk of falling down by losing the balance or because of other causes.



KEEP CHILDREN AWAY

This symbol expresses to keep the children away against any risk.



DO NOT STAND NEAR THE MACHINE WHILE IT IS WORKING

This symbol expresses not to stand near the machine while it is working to avoid any injury.

1. INTRODUCTION

1.1. INTRODUCTORY AND BASIC INFORMATION ABOUT THE MACHINE SPECIFICATIONS

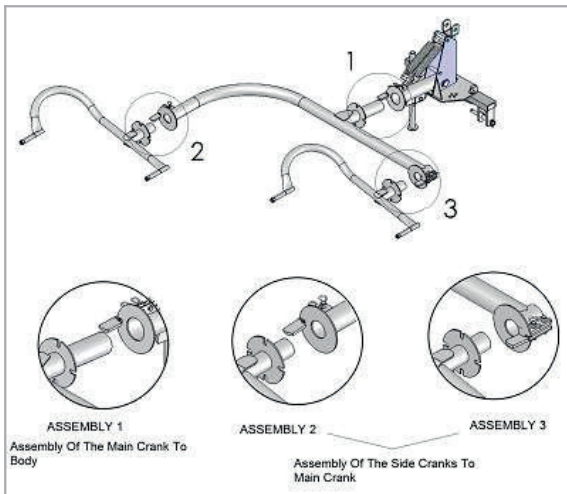
Finger Wheel Rake uses at the spread of the product, turning of the product and again collect. It is an agricultural tool in hanging type. It provides saving from time and labor, operates in all kind of the terrain conditions. It facilitates the work of the farmer and using in all kind of tractor with three point hanger layout.

Finger wheel rake facilitates distribute to surface of the field harvested green grass, ventilate and dehydrate. It increases the efficiency of the soil also provides recycling the product residues in the field (Barley, Wheat Stalks). Thus it develops the economy. The tool has 4 pcs finger wheel . Finger wheel rake is made spring steel, twisted the ends and connected with bolts to the disc. Each wheel has 40 pcs flexible fingers. Fingers opened for raking. Thus spread of the product, turning of the product and again collect are realized regularly.

Wheels connected at axes different position from front to back as gradual to battery chassis. There are three point hanger layout and 2 pcs battery on the main roof. 2 pcs finger wheel connected to a battery. Wheels running connected with each other.



1.2. CONNECTIONS OF THE MACHINE



The Working Principle: If you change shape of the connection with grass collection to single or double row, you will obtain the grass spread or transport situation.

Figure 1: Assembly Of The Main Crank And Side Crank

1. INTRODUCTION

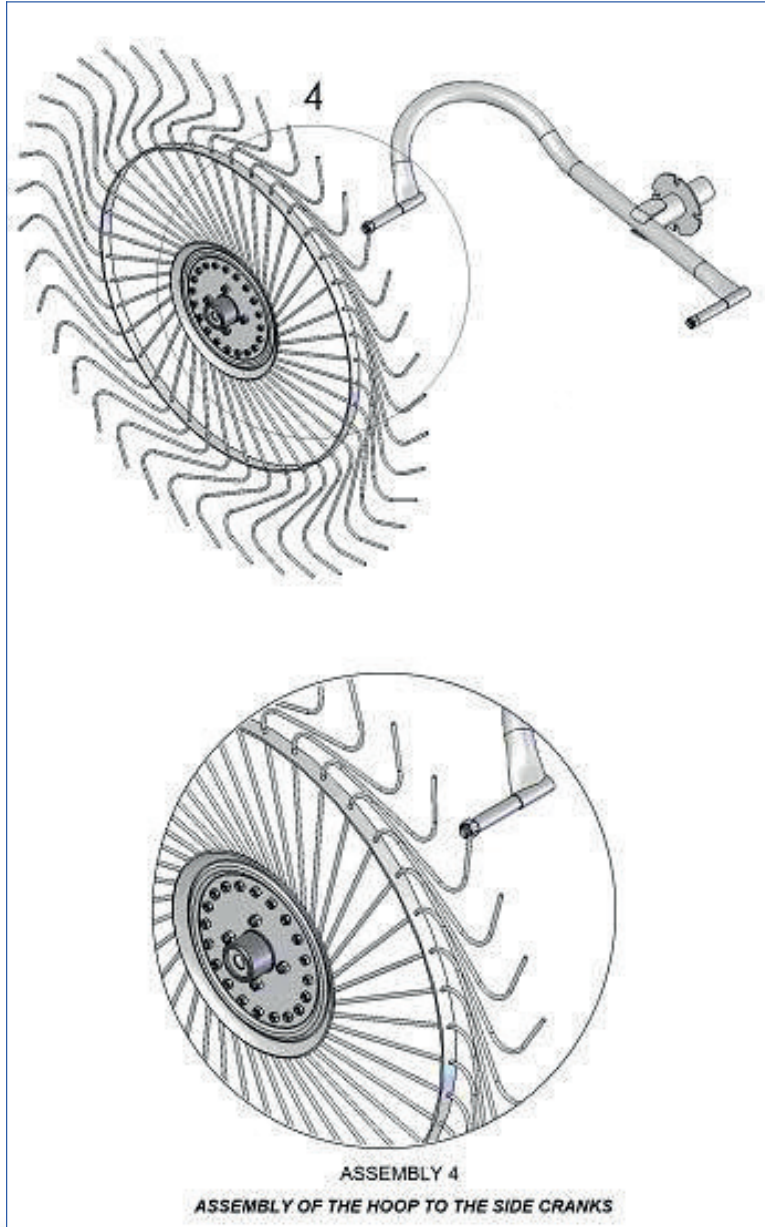


Figure 2: Assembly Of The Hoop To The Side Cranks



CAUTION!

During Operation The Hooks Should Turning Clockwise.

1. INTRODUCTION

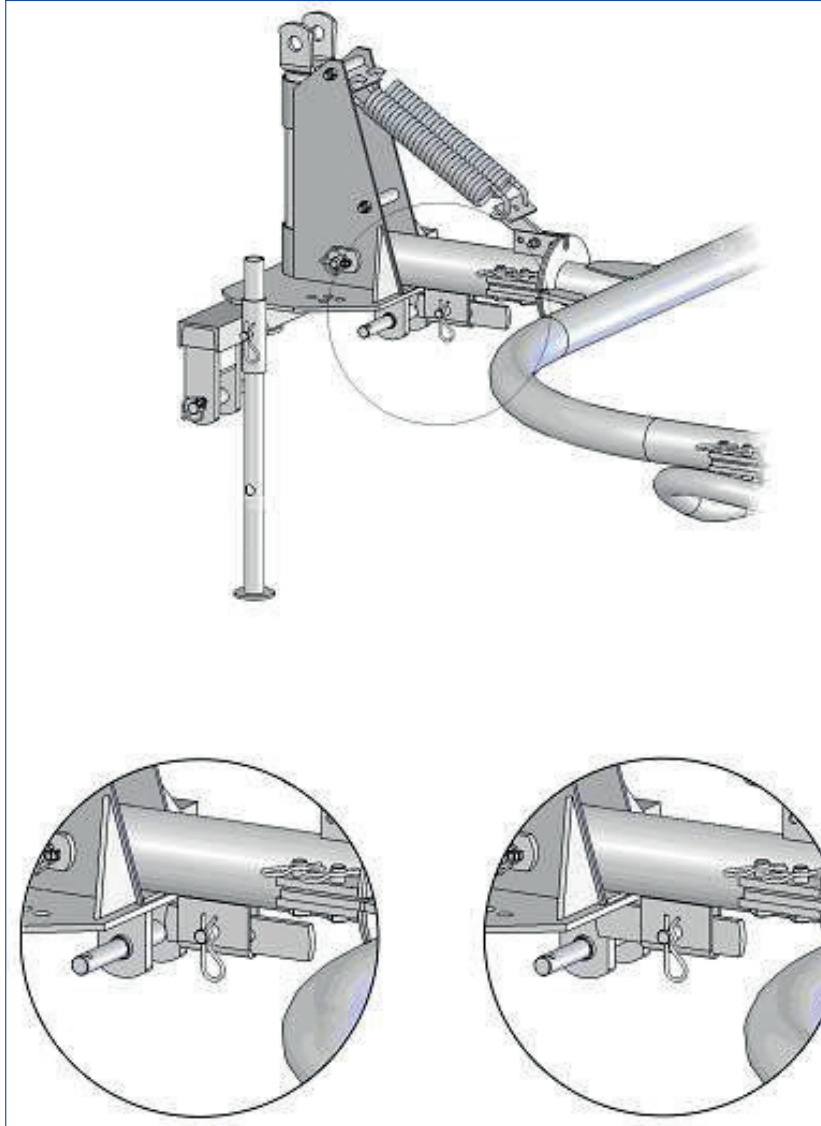


Figure 3: Locking Latch

1.3. SAFETY INSTRUCTIONS TO BE TAKEN BY THE USER



While operating the machine you should wear a uniform and a mask. Specially when you are operating the machine with a tractor without a cabin you should make sure to wear ear plugs. Working with a tractor without a cabin is equal to 90db (which is the same noise as being on a high traffic). While working on a noisy area the maximum time you should work is 4 hours Daily. Do not operate the machine if you are tired, you are sick, the weather is very hot or you are under the influence of the alcohol.

2. TECHNICAL SPECIFICATIONS

FINGER WHEEL RAKE TECHNICAL SPECIFICATIONS		
	4 RAKES	5 RAKES
Length	2160 mm	2400 mm
Width	3500 mm	4800 mm
Height	1400 mm	1400 mm
Weight	185 kg	235 kg
Working Width	3500 mm	4800 mm
Working Speed	10-12 km/hr	10-12 km/hr
Working Capacity	05 ha/hr	07 ha/hr

3. INFORMATIONS ABOUT THE PERSONAL PROTECTIVE EQUIPMENT, INFORMATIONS ABOUT HUMAN AND ENVIRONMENTAL HEALTH, SPECIAL SAFETY INFORMATIONS TO BE TAKEN BY THE USER

- > Before operating the machine make sure to read the user manuals of the machines functional parts otherwise you can cause accidents.
- > Use appropriate working gear. Do not wear floating clothing.
- > These clothings can be caught by the machines spinning or functioning arms.
- > If you are operating the machine first time then make sure to read the user manual carefully. If you are not sure of anything please get in contact with your supplier.
- > When transporting the machine from one place to another make sure you lift the machine from the lifting points indicated.
- > Exhaust gases are poisonous. So for this reason never start the engine of the tractor in an covered area.
- > When you take off the first time you should take off smoothly. If you take off suddenly with the tractor it can be very dangerous.
- > Never put the tractor in neutral while riding down hill.
- > While the tractor is in motion never go near it.
- > When attaching a machine on the tractor make sure to use the weights in the front or the back.
- > When the weather is very hot make sure to not fill the petrol tank full .
- > When the weather is very hot if you have any petrol leaks make sure to wipe it straight away.
- > When riding on the road make sure that the lights are visible at all times.
- > When riding to and from the farm never sit on the machine.
- > When you connect the machine to the tractor, you should know that steering, the weight, and braking will change.
- > You should take extra caution when riding with a machine connected especialy on turns.
- > Before going on the road make sure to check the tyre pressure.



CAUTION!

SAFETY INSTRUCTIONS MUST BE FOLLOWED STRICTLY OTHERWISE FATAL ACCIDENTS MAY OCCUR.

4. THINGS TO BE CAREFUL OF WHILE OPERATING THE MACHINE

4.1. BEFORE OPERATING

- > Before running the machine make sure to pull the handbrake and gear lever into neutral.
- > You should take extra care when connecting and disconnecting the machine from the tractor.
- > While connecting and disconnecting the machine from the tractor make sure there is no one in between it.
- > Run the tractor after taking all safety precautions.
- > Before running the machine and the tractor make sure you can see all around you so that there is no one for example children and animals.
- > Before running the machine make sure there is space between the ground and the wires of the machine. The wires of the machine should not touch the ground.

4.2. WHILE OPERATING

- > While running the machine if you hear a abnormal sound you should turn off the machine.
- > To clean or adjust the machine make sure that the tractor engine is not running.
- > The moving and turning parts should never be touched.
- > Before touching the machines parts make sure that the machine comes to a full stop.
- > You should never pressure the machine and play around with the rpm.
- > While the machine is running make sure not to stand or put your hand in it.
- > If your tractor engine is running never leave your cabin driver seat.
- > While running the machine never reverse.
- > When you are returning from the farm you should take extra care when making turns while the machine is connected to the tractor because of the weight.
- > While running the machine make sure you or any one else gets close to it.

4.3. AFTER OPERATING

- > When you have finished with your work turn off the tractor engine pull the handbrake and take out the key.
- > The adjustments and the repairs should only be done while the tractor is turned off and the tyres are secured.
- > Before adjusting or repairing make sure to have the tractor key with you.
- > When you have returned back from work and leaving away from the tractor and the machine, make sure to bring down the machine so it touches the ground.
- > If possible park the tractor on flat surface and pull the handbrake and put it in to gear. If you have parked it facing upper hill put it in first gear, if you have parked it facing down hill put it in to reverse, either way make sure to have the handbrake on.

5. PRELIMINARY PREPERATIONS, SETTINGS AND INSTRUCTIONS TO BE FOLLOWED TO OPERATE THE MACHINE

5.1. ADJUSTMENT INSTRUCTIONS

There is thickness of 8 mm sheet plate on the three point hanger system road position of the finger wheel on pulling direction and for give the angle of direction. There are 4 pcs holes with pin connection on both sides of the sheet plate according to right and left working position.

If you change the chassis of the wheel and connection shapes of the main body, you can collect grass to single row and double row, spreading of the grass or transport situation.

Flexible finger of the finger wheel which is pressure to grass is set with hydraulic lifting mechanism of the tractor.

In Case Of Emergency: You should stop the motion of the P.T.O.

While Running The Machine: You should check the adjustments very often.

5.2. PERIODIC MAINTENANCE INFORMATIONS, TO BE FOLLOWED RULES, TIME PERIOD OF THE PERIODIC MAINTENANCE, INFORMATIONS OF THE MAINTENANCE TO BE MADE BY WHO

The rakes should be at hangar or closed area. You should take precautions against rusting, bent and broken parts should repair, worn parts should change.

While working in the field, at hydraulic layout front pull crank is brought to swimmer position. Also a depth adjustment is not made. Their own weights provide work at the depth of processing. If the field is very hard and grassy, you must put extra weights.

Rakes does not want more power. Generally they are pulled with 8-12 km/hr speed. If working width is not wide, you must pull a little fast but if working width is wide, you must pull a little slow.

STANDARD NUMBER: TS 8136

USAGE TIME: 10 YEARS

5. PRELIMINARY PREPERATIONS, SETTINGS AND INSTRUCTIONS TO BE FOLLOWED TO OPERATE THE MACHINE



Picture 1: Work Situation Of The Machine



Picture 2: Road Situation Of The Machine

6. TROUBLESHOOTING

6.1. TO BE FOLLOWED RULES ABOUT TROUBLESHOOTING

Outside of their own repairs to be taken by consumer is not covered by the warranty the defective part. During repairing if you do not use the original part, this part won't covered by the warranty. Responsibility of the human and environmental health belongs to consumer.

6.2. TROUBLESHOOTING TO BE TAKEN BY CONSUMER

Troubleshooting Authority Of The Consumer: All repairs other than the ones stated above should be performed at authorized service centres near to you.

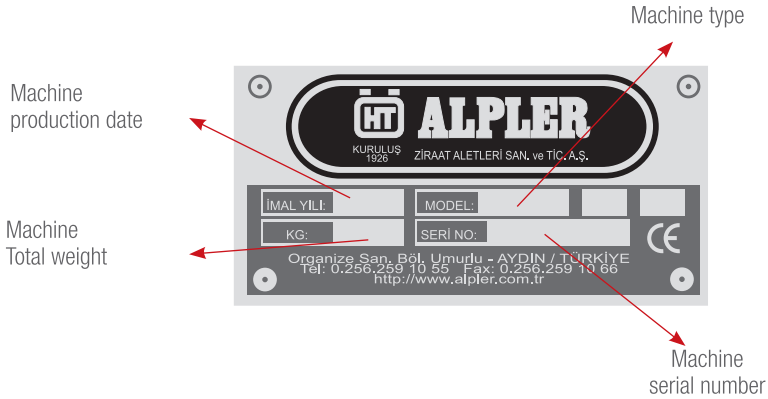
6.3. PROVIDING SERVICES CENTERS

All spare parts for our machines should be replaced with original parts at all times.

7. WARRANTY CONDITIONS

1. Warranty starts when you receive the machine and is 2 years from that day.
2. All parts of the goods covered warranty of our company.
3. In the event of failure of good in the warranty period, at repaire lapsed time is added to warranty period. The repair of good time up to 30 working days. This time, the absence of service station of good respectively from one of the seller, dealer, agent, representative, importer or manufacturer starts from the date of delivery.
4. Within the warranty period of product, both in material and workmanship as well as because of mounting error, labor costs, cost of replaced parts or under any other name will be repaired without any charge.
5. Product's;
 - As from the date of delivery within warranty period to stay with the condition within a year, two or more than recurrence of same fault or more than four different defects as a result, acquiring continuity of ware to benefit from product,
 - Exceeding the maximum period for repair,
 - In the absence of a service station respectively one of the seller, dealer, agent, representative, importer or manufacturer report written by the fault can not be possible, will change as free.
6. In User Manual of good from use of manual contrary to the matters defects arising excluded from coverage.
7. About warranty document's problems can apply to Ministry of Industry and Trade, General Directorate of Consumer and Competition Protection.

8. WARRANTY



Use original spare parts in ALPLER branded products. The customer will be responsible for the problems that occur due to not using original spare parts. The Finger Wheel Rake will not be covered by the warranty when non-original parts are installed on the machine, additional equipment is attached on the machine or it is used after removing standard parts.

While ordering spare parts, for the codes beginning with '0', machine serial number together with the part code should be provided. For other codes, it is not necessary to provide the machine serial number.

Label information is important for identifying the machine and for spare part orders. As a measure against the illegibility of the label due to deformation or its loss, label information on the machine should be written literally in the corresponding fields of the following label picture, and it should be retained.

Our Finger Wheel Rakes are **warranted for 2 years** for faults that may occur due to material, workmanship and mounting errors.

Faults resulting from improper use are not covered by the warranty. The average lifetime is 10 years.

8. WARRANTY

WARRANTY CERTIFICATE

Warranted by ALPLER for a period of two years

BRAND: ALPLER

PRODUCT TYPE:

MODEL:

SERIAL NUMBER:

DATE OF PRODUCTION:

Seller's

Title:.....

Address:.....

Phone:.....

Fax:.....

Invoice Date:.....

Signature & Seal



Exports to 75 countries
on 5 continents.

HT ALPLER

ALPLER AGRICULTURAL MACHINERY

Umurlu Organize Sanayi Bölgesi Umurlu-AYDIN / TÜRKİYE

Tel: +90 (256) 259 1055

Fax: +90 (256) 259 1066

Web: www.alpler.com.tr

E-mail: alpler@alpler.com.tr